



CISUN LIGHTING CO.,LTD  
ADD: NO5, HUATAI DONG ROAD,  
GUZHEN TOWN ZHONGSHAN CITY, CHINA  
[www.cslamp.com](http://www.cslamp.com) [Info@cslamp.com](mailto:Info@cslamp.com)

LEADING BRAND OUTDOOR LIGHTING

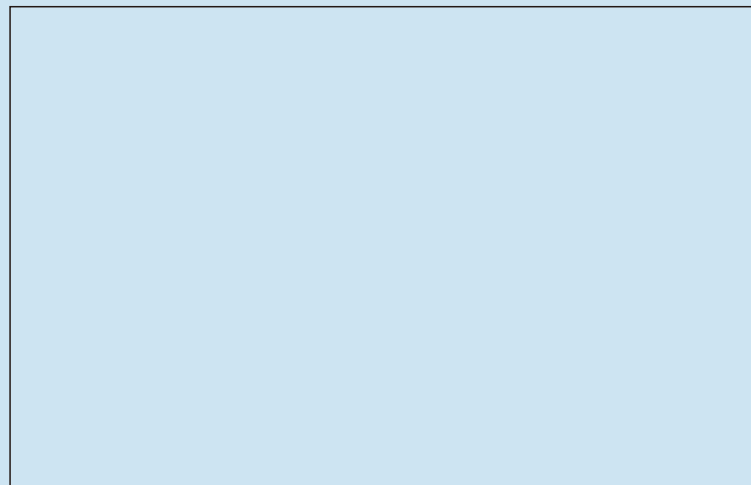


CISUN LIGHTING  
PRODUCT CATALOG



WELCOME TO CISUN LIGHTING CO., LTD

COMPANY PROFILE



## Outdoor lighting series



LED  
LINEAR LIGHTING  
004-010



LED  
WALL WASHER LIGHT  
011-018



LED  
LINEAR LIGHTING  
019-022





# LED LINEAR LIGHTING

## Product features:

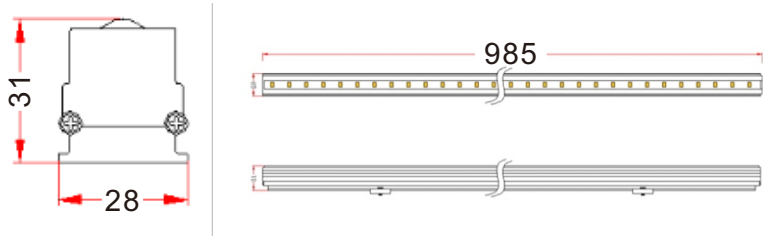
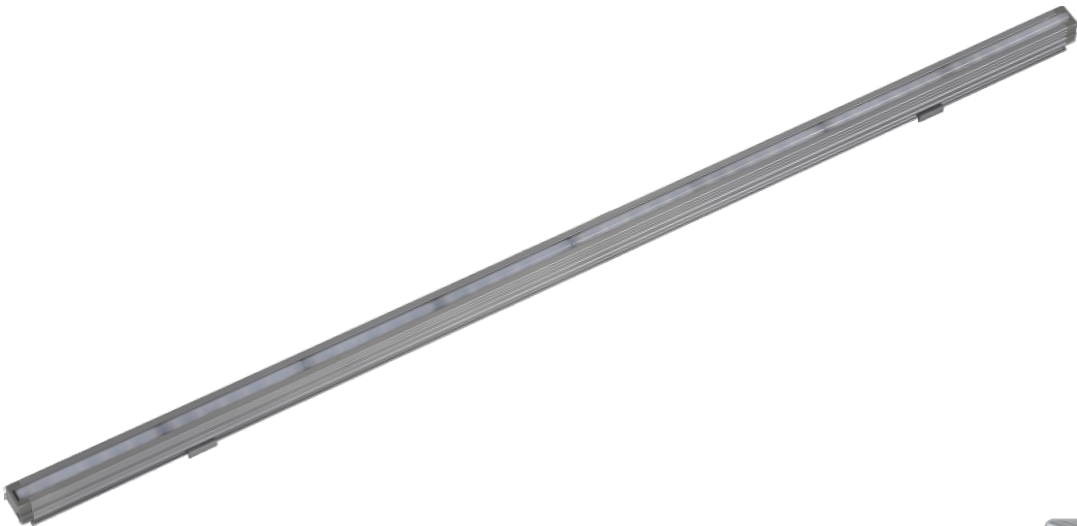
- Control mode: monochrome normally on effect (red, green, blue, yellow, white, warm white); Internal control synchronous RGB 7 colour change;
- External control synchronous RGB 7 colour change; International standard DMX512 protocol control system;
- Waterproof level: IP65





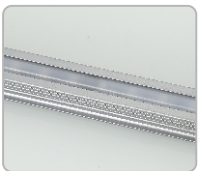


L2831A



Product features:

- Control mode: monochrome normally on effect (red, green, blue, yellow, white, warm white); Internal control synchronous RGB 7 colour change;
- External control synchronous RGB 7 colour change; International standard DMX512 protocol control system;
- Waterproof level: IP65

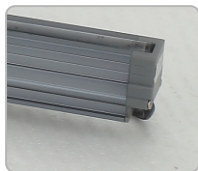
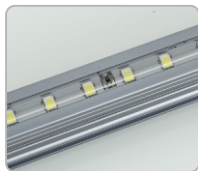
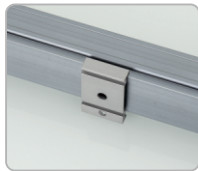
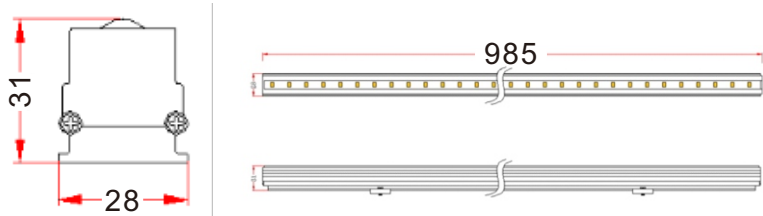
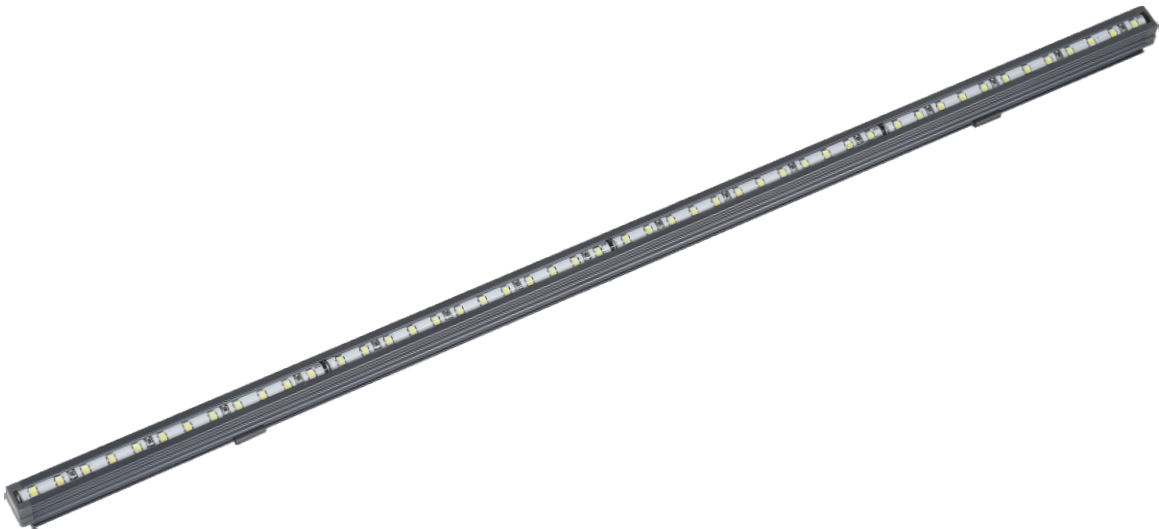


PRODUCT PARAMETERS

PRODUCT MODEL	L2831A
Rated Power	12W
LED Quantity	48pcs
Size	W28*H31*L985mm
Power input	DC12V
Light control	DMX compatible
Beam angle	120°
Light color	Single/RGB/RGBW
Housing material	Aluminum alloy
Difuser	Milky PMMA
Housing color	Grey
IP rate	IP65



L2831B



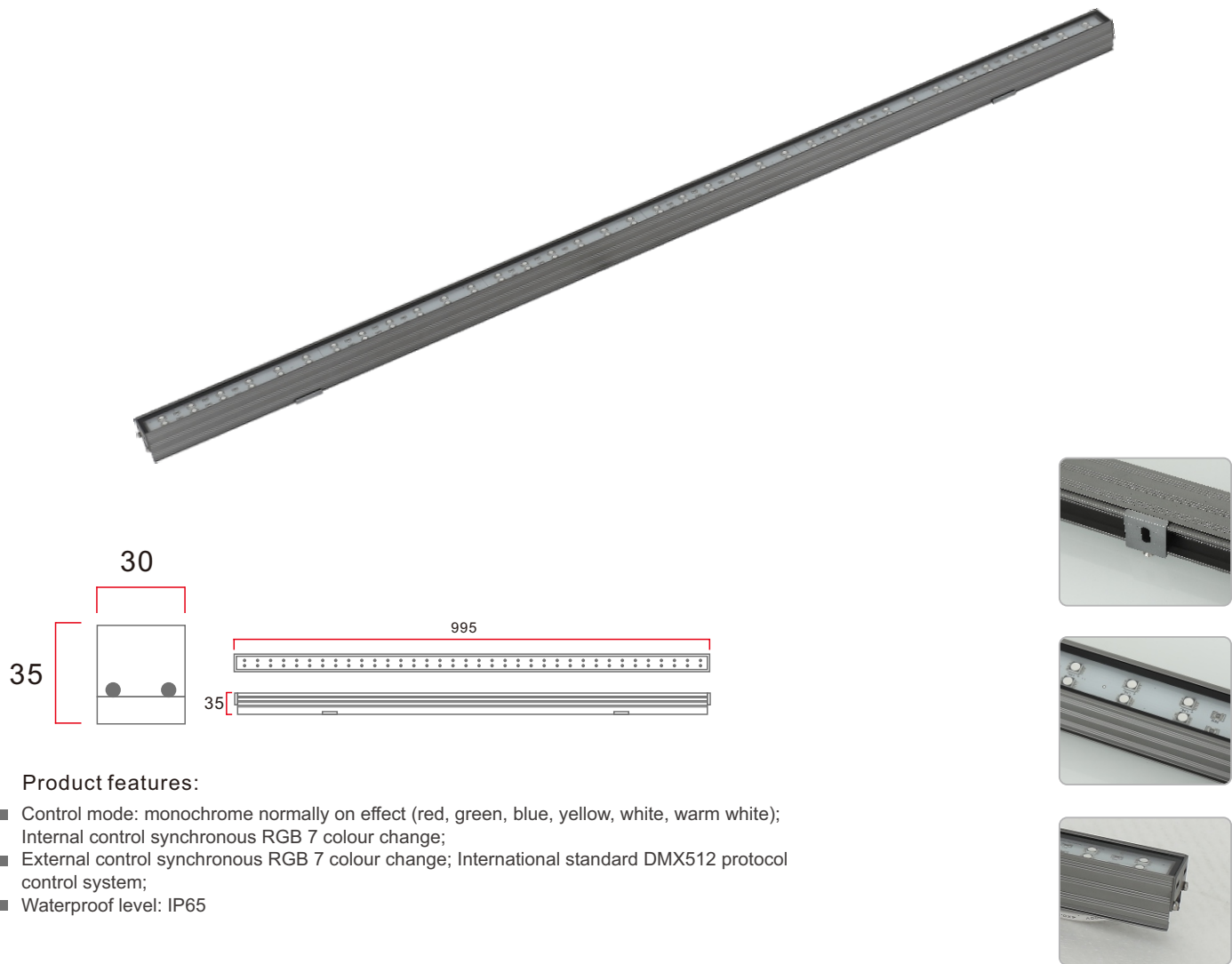
PRODUCT PARAMETERS

PRODUCT MODEL	L2831B
Rated Power	12W
LED Quantity	48pcs
Size	W28*H31*L985mm
Power input	DC12V
Light control	DMX compatible
Beam angle	120°
Light color	Single/RGB/RGBW
Housing material	Aluminum alloy
Difuser	Transparent PMMA
Housing color	Grey
IP rate	IP65





L3035



- Product features:
- Control mode: monochrome normally on effect (red, green, blue, yellow, white, warm white); Internal control synchronous RGB 7 colour change;
  - External control synchronous RGB 7 colour change; International standard DMX512 protocol control system;
  - Waterproof level: IP65

PRODUCT PARAMETERS

PRODUCT MODEL		L3035
Rated Power		17.5W
LED Quantity		72pcs
Size		W30*H35*L995mm
Power input		DC24V
Light control		DMX compatible
Beam angle		120°
Light color		Single/RGB
Housing material		Aluminum alloy+Glass
Difuser		Transparent
IP rate		IP65



L2136

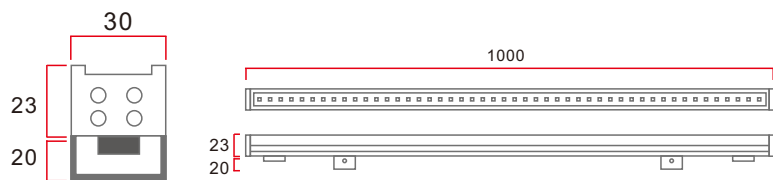


PRODUCT PARAMETERS

PRODUCT MODEL		L2136
Rated Power		15W
LED Quantity		48pcs
Size		W21*H36*L995mm
Power input		DC24V
Light control		DMX compatible
Beam angle		120°
Light color		Single/RGB/RGBW
Housing material		Aluminum alloy
Difuser		Milky Acrlic
IP rate		IP66

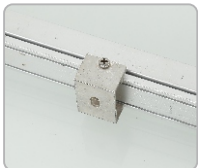


L3023A



Product features:

- Control mode: monochrome normally on effect (red, green, blue, yellow, white, warm white); Internal control synchronous RGB 7 colour change;
- External control synchronous RGB 7 colour change; International standard DMX512 protocol control system;
- Waterproof level: IP65

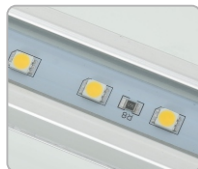
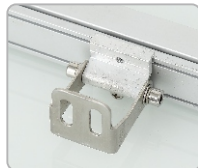
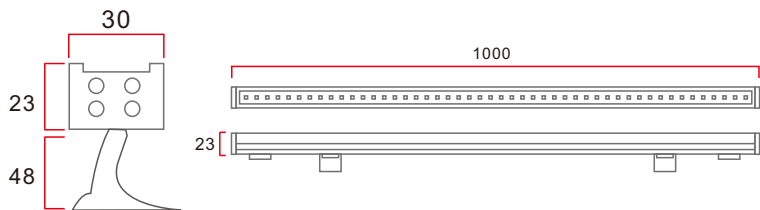


PRODUCT PARAMETERS

PRODUCT MODEL	L3023A
Rated Power	12W
LED Quantity	48pcs
Size	W30*H23*L1000mm
Power input	DC24V
Light control	N/A or DMX
Beam angle	120°
Light color	Single/RGB
Housing material	Aluminum alloy
Difuser	Toughened glass
IP rate	Structural waterproof IP65



L3023B

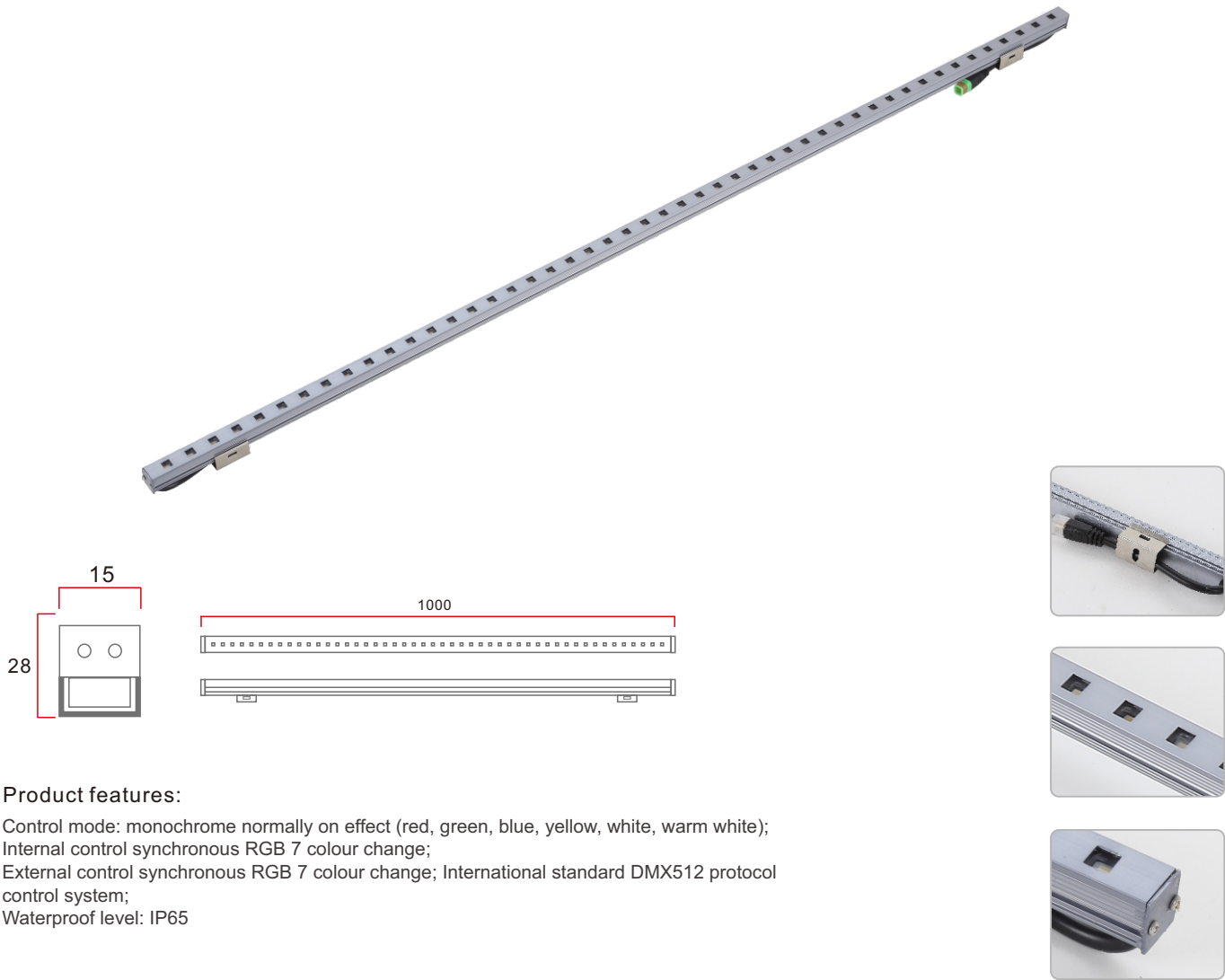


PRODUCT PARAMETERS

PRODUCT MODEL	L3023B
Rated Power	12W
LED Quantity	48pcs
Size	W30*H23*L1000mm
Power input	DC24V
Light control	N/A or DMX
Beam angle	120°
Light color	Single/RGB
Housing material	Aluminum alloy
Difuser	Toughened glass
IP rate	Structural waterproof IP65



L1815



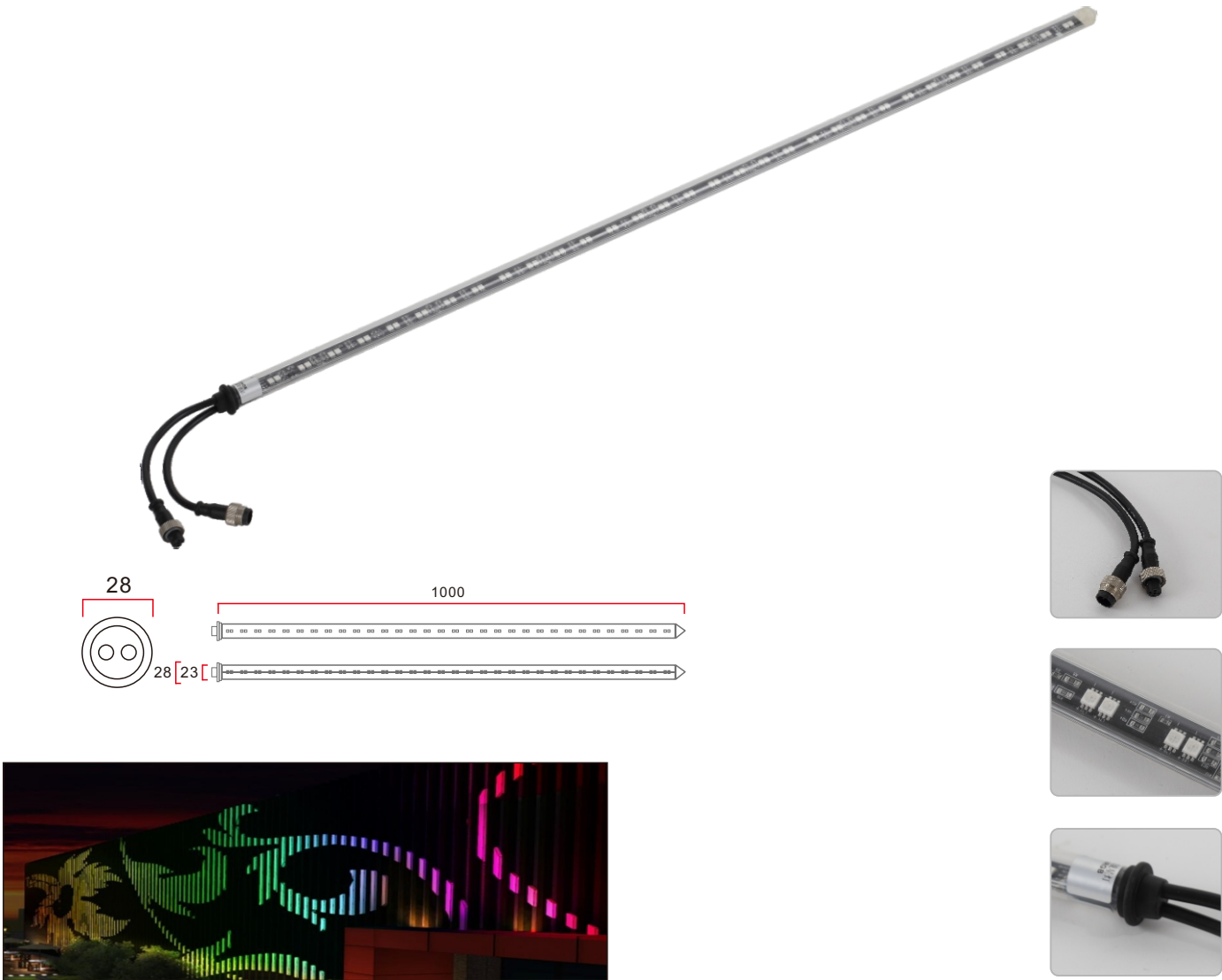
- Product features:
- Control mode: monochrome normally on effect (red, green, blue, yellow, white, warm white); Internal control synchronous RGB 7 colour change;
  - External control synchronous RGB 7 colour change; International standard DMX512 protocol control system;
  - Waterproof level: IP65

PRODUCT PARAMETERS

PRODUCT MODEL		L1815
Rated Power		10W
LED Quantity		48pcs
Size		W18*18*L1000mm
Power input		DC24V
Light control		N/A or DMX
Beam angle		120°
Light color		Single/RGB
Housing material		Aluminum alloy
Difuser		Aluminum cover
IP rate		Structural waterproof IP65



JS20-D32



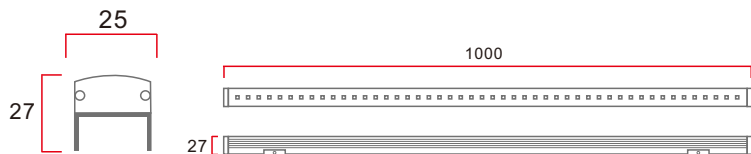
PRODUCT PARAMETERS

PRODUCT MODEL		JS20-D32
Rated Power		30W
LED Quantity		128pcs
Size		φ23*L1000mm
Power input		DC15V
Light control		N/A or DMX
Beam angle		360°
Light color		RGB
Housing material		PC
Difuser		PC
IP rate		Structural waterproof IP64





L3023A



- Product features:
- Control mode: monochrome normally on effect (red, green, blue, yellow, white, warm white); Internal control synchronous RGB 7 colour change;
  - External control synchronous RGB 7 colour change; International standard DMX512 protocol control system;
  - Waterproof level: IP65



PRODUCT PARAMETERS

PRODUCT MODEL		L3023A
Rated Power		12W
LED Quantity		48pcs
Size		W25*H27*L1000mm
Power input		DC24V
Light control		N/A or DMX
Beam angle		120°
Light color		Single/RGB
Housing material		Aluminum alloy
Difuser		PC cover
IP rate		Waterproof IP65







# LED WALL WASHER LIGHT

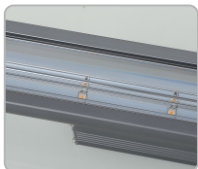
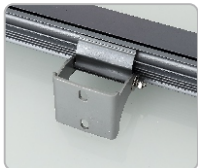
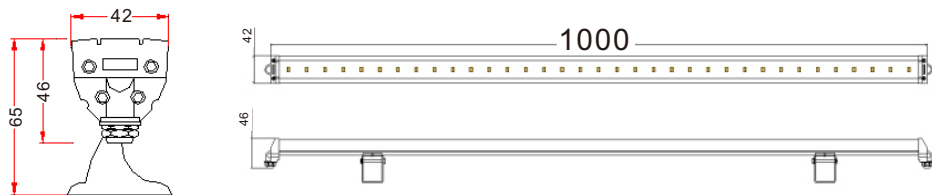
## Product features:

- Built-in constant-current AC85V - AC265V wide voltage driver, ensure lamps and lanterns in different countries, regions or voltage instability when working;
- Control mode: monochrome normally on effect (red, green, blue, yellow, white, warm white); Internal control synchronous RGB 7 colour change;
- External control synchronous RGB 7 colour change; International standard DMX512 protocol control system;
- Waterproof level: IP65





WS4030

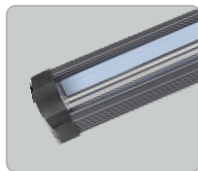
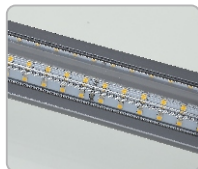
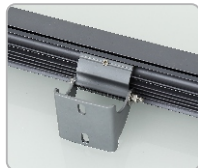
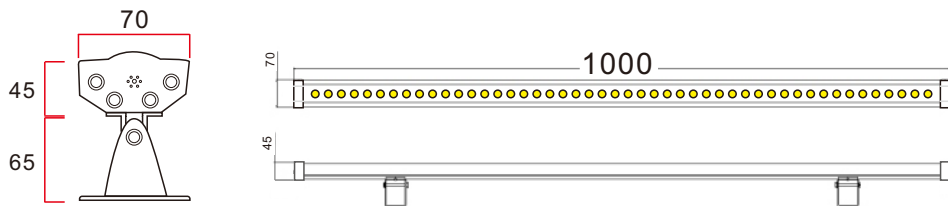
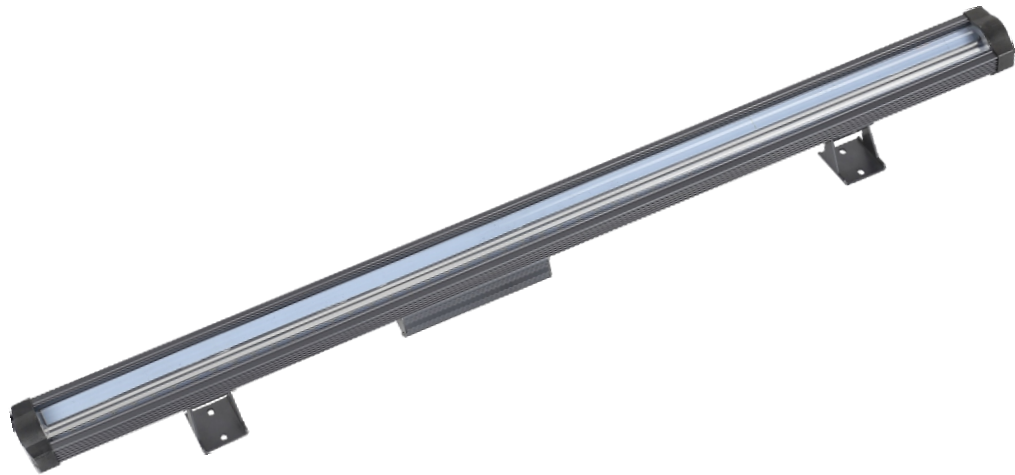


- Product features:
- Built-in constant-current AC85V - AC265V wide voltage driver, ensure lamps and lanterns in different countries, regions or voltage instability when working;
  - Control mode: monochrome normally on effect (red, green, blue, yellow, white, warm white); Internal control synchronous RGB 7 colour change;
  - External control synchronous RGB 7 colour change; International standard DMX512 protocol control system;
  - Waterproof level: IP65

PRODUCT PARAMETERS

PRODUCT MODEL	WS4030-24W
Rated Power	24W
LED Quantity	24pcs
Size	W40*H30*L1000mm
Power input	AC85~260V or DC24V
Light control	N/A
Beam angle	120°
Light color	Single
Luminous Flux	2280LM
Housing material	Aluminum(surface anodized)
Difuser	PMMA
Housing color	Grey
IP rate	Structural waterproof IP65

WS6540

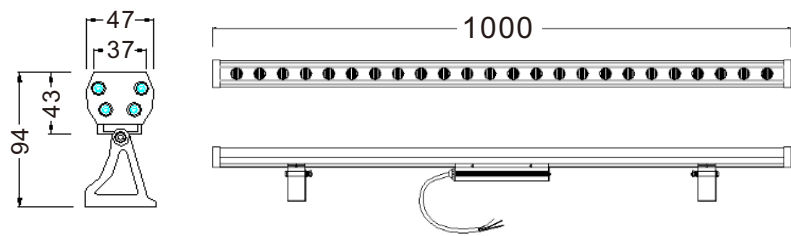


PRODUCT PARAMETERS

PRODUCT MODEL	WS6540-48W
Rated Power	48W
LED Quantity	48pcs
Size	W*H*L1000mm
Power input	AC85~260V or DC24V
Light control	N/A
Beam angle	120°
Light color	Single
Luminous Flux	4560LM
Housing material	Aluminum(surface anodized)
Difuser	PMMA
Housing color	Grey
IP rate	Structural waterproof IP65

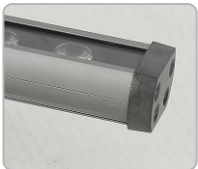
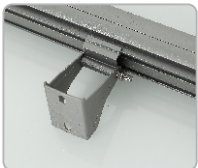


WS4532



Product features:

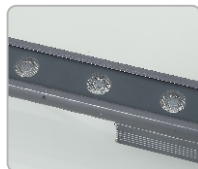
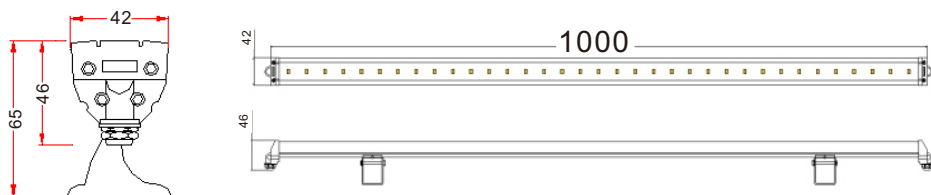
- Built-in constant-current AC85V - AC265V wide voltage driver, ensure lamps and lanterns in different countries, regions or voltage instability when working;
- Control mode: monochrome normally on effect (red, green, blue, yellow, white, warm white); Internal control synchronous RGB 7 colour change;
- External control synchronous RGB 7 colour change; International standard DMX512 protocol control system;
- Waterproof level: IP65



PRODUCT PARAMETERS

PRODUCT MODEL	WS4532
Rated Power	18W/24W
LED Quantity	18pcs/24pcs
Size	W40*H30*L1000mm
Power input	AC85~260V or DC24V
Light control	N/A or DMX
Beam angle	15° , 30° , 45° , 60° , 90°
Light color	Single/RGB
Luminous Flux	1710LM/2280LM
Housing material	Aluminum(surface anodized)
Difuser	Toughened glass
Housing color	Grey
IP rate	IP65

WS4027

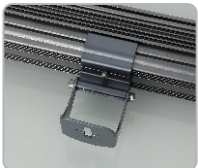
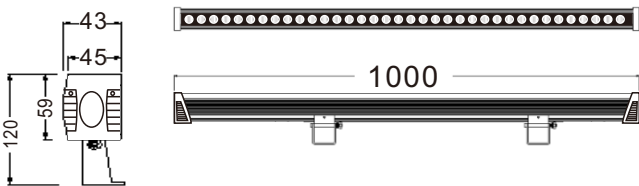


PRODUCT PARAMETERS

PRODUCT MODEL	WS4027
Rated Power	18W/24W
LED Quantity	18pcs/24pcs
Size	W40*H27*L1000mm
Power input	AC85~260V or DC24V
Light control	N/A
Beam angle	15° , 30° , 45° , 60° , 90°
Light color	Single/RGB
Luminous Flux	1710LM/2280LM
Housing material	Aluminum(surface anodized)
Difuser	Toughened glass
Housing color	Grey
IP rate	Structural waterproof IP65



WS4359



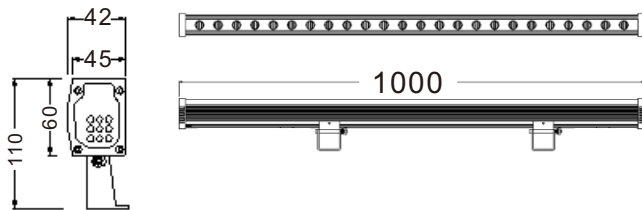
- Product features:
- Built-in constant-current AC85V - AC265V wide voltage driver, ensure lamps and lanterns in different countries, regions or voltage instability when working;
  - Control mode: monochrome normally on effect (red, green, blue, yellow, white, warm white); Internal control synchronous RGB 7 colour change;
  - External control synchronous RGB 7 colour change; International standard DMX512 protocol control system;
  - Waterproof level: IP65

PRODUCT PARAMETERS

PRODUCT MODEL	WS4359-36W
Rated Power	36W
LED Quantity	36pcs
Size	W43*H59*L1000mm
Power input	AC85~260V or DC24V
Light control	N/A or DMX
Beam angle	15° , 30° , 45° , 60° , 90°
Light color	Single color/RGB/RGBW
Luminous Flux	3420LM
Housing material	Aluminum(surface anodized)
Difuser	Toughened glass
Housing color	Grey
IP rate	IP65



WS4260

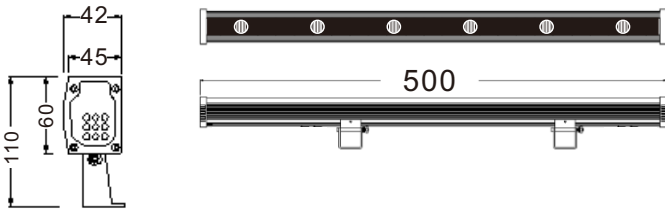


PRODUCT PARAMETERS

PRODUCT MODEL	WS4260-24W
Rated Power	24W
LED Quantity	24pcs
Size	W42*H60*L1000mm
Power input	AC85~260V or DC24V
Light control	N/A or DMX
Beam angle	15° , 30° , 45° , 60° , 90°
Light color	Single/RGB
Luminous Flux	2280LM
Housing material	Aluminum(surface anodized)
Difuser	Toughened glass
Housing color	Grey
IP rate	IP65



WS4260-RGBW



Product features:

- Built-in constant-current AC85V - AC265V wide voltage driver, ensure lamps and lanterns in different countries, regions or voltage instability when working;
- Control mode: monochrome normally on effect (red, green, blue, yellow, white, warm white); Internal control synchronous RGB 7 colour change;
- External control synchronous RGB 7 colour change; International standard DMX512 protocol control system;
- Waterproof level: IP65



PRODUCT PARAMETERS

PRODUCT MODEL	WS4260-RGBW
Rated Power	24W
LED Quantity	6pcs
Size	W45*H60*L500mm
Power input	DC24V
Light control	DMX
Beam angle	15° , 30° , 45° , 60° , 90°
Light color	RGBW
Luminous Flux	1320LM
Housing material	Aluminum(surface anodized)
Difuser	Toughened glass
Housing color	Grey
IP rate	IP65







# LED PIXELS LIGHT

## Product features:

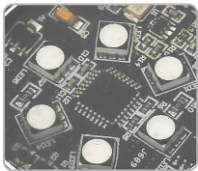
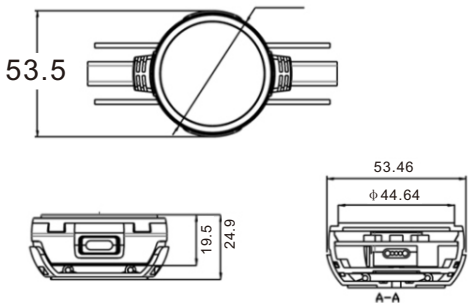
- Through the pixel color mix to achieve by the point and surface effects, can be replaced by a certain size of the display
- Professional waterproof joint combination of multi-level connection, you can display text and patterns
- The use of imported silica gel sealing waterproof, product performance and life more security
- Small size, low power consumption, is widely used in decorative lighting projects, floor, landscape lighting, etc.
- Waterproof level: Ip65







PS05-DMX



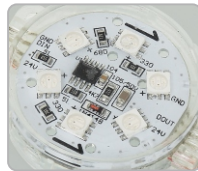
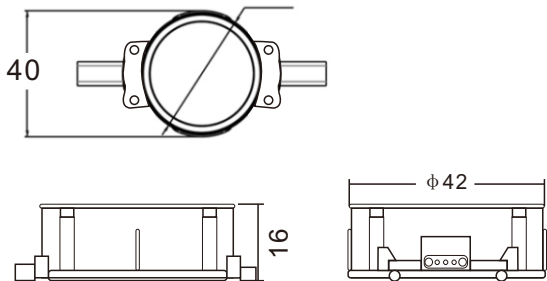
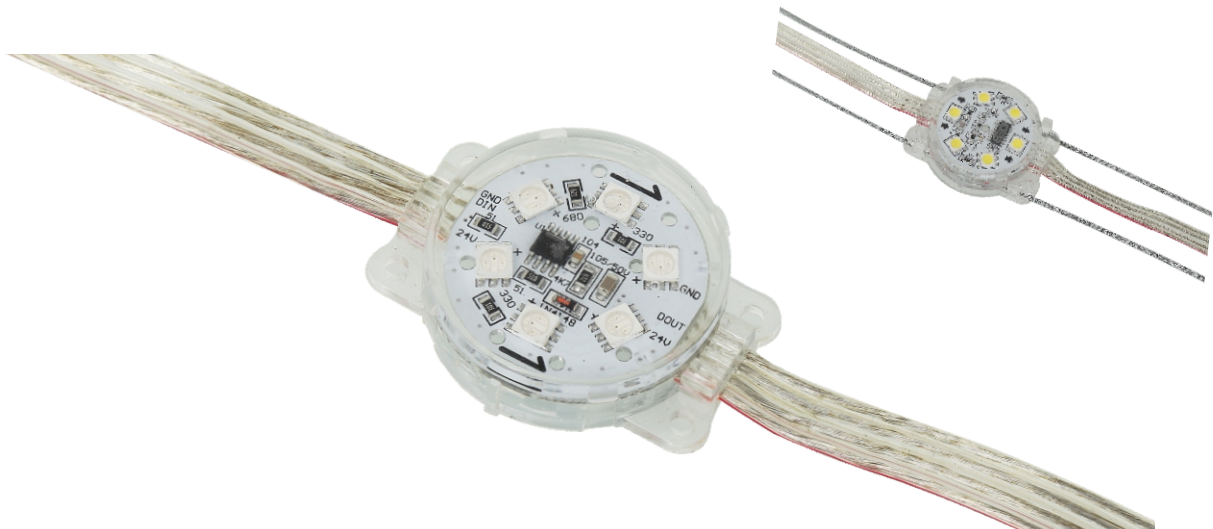
Product features:

- Through the pixel color mix to achieve by the point and surface effects, can be replaced by a certain size of the display
- Professional waterproof joint combination of multi-level connection, you can display text and patterns
- The use of imported silica gel sealing waterproof, product performance and life more security
- Small size, low power consumption, is widely used in decorative lighting projects, floor, landscape lighting, etc.
- Waterproof level: Ip65

PRODUCT PARAMETERS

PRODUCT MODEL	PS05-DMX control
Rated Power	1W
Luminous Flux	30LM
Power input	DC24V~48V
Dimension	φ53.5mm*25mm
IP rate	IP67
Light color	RGB(CREE chips)
Useful life	50000h
Beam angle	105°
Ambient temperature	-30°C~+60°C
Housing Material	Die casting aluminum A360&Anti ultraviolet PC mask
Grey level	65536 level
Contro	DMX (Automatically/manually addressing)

PS02-DMX

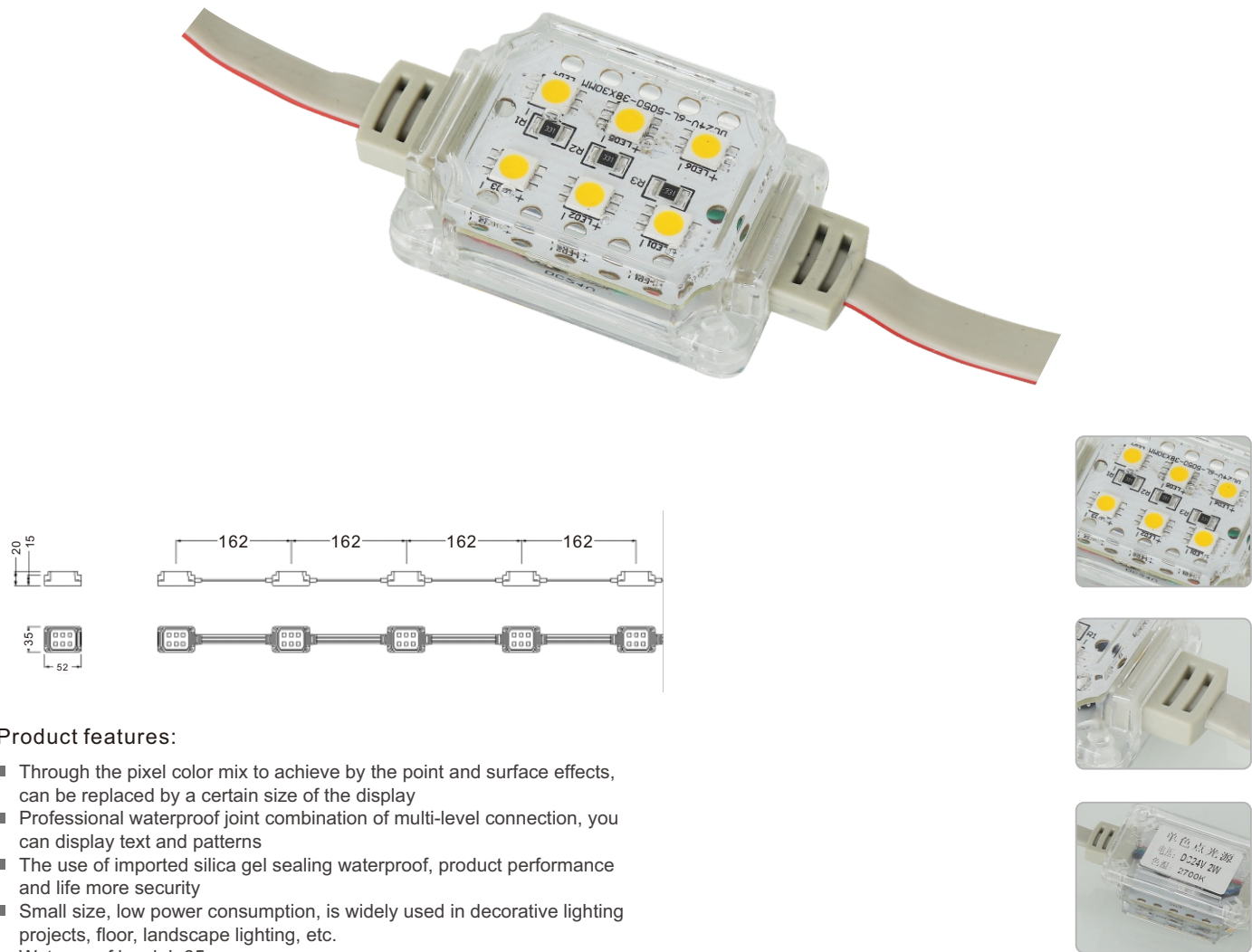


PRODUCT PARAMETERS

PRODUCT MODEL	PS02-DMX
Rated Power	1.5W
LED Quantity	6pcs
Luminous Flux	30Lm
Size	φ42*H16mm
Power input	DC24V
Light control	N/A or DMX
Beam angle	120°
Light color	RGBW or RGB
Housing material	Plastic PC
IP rate	IP65



PS01



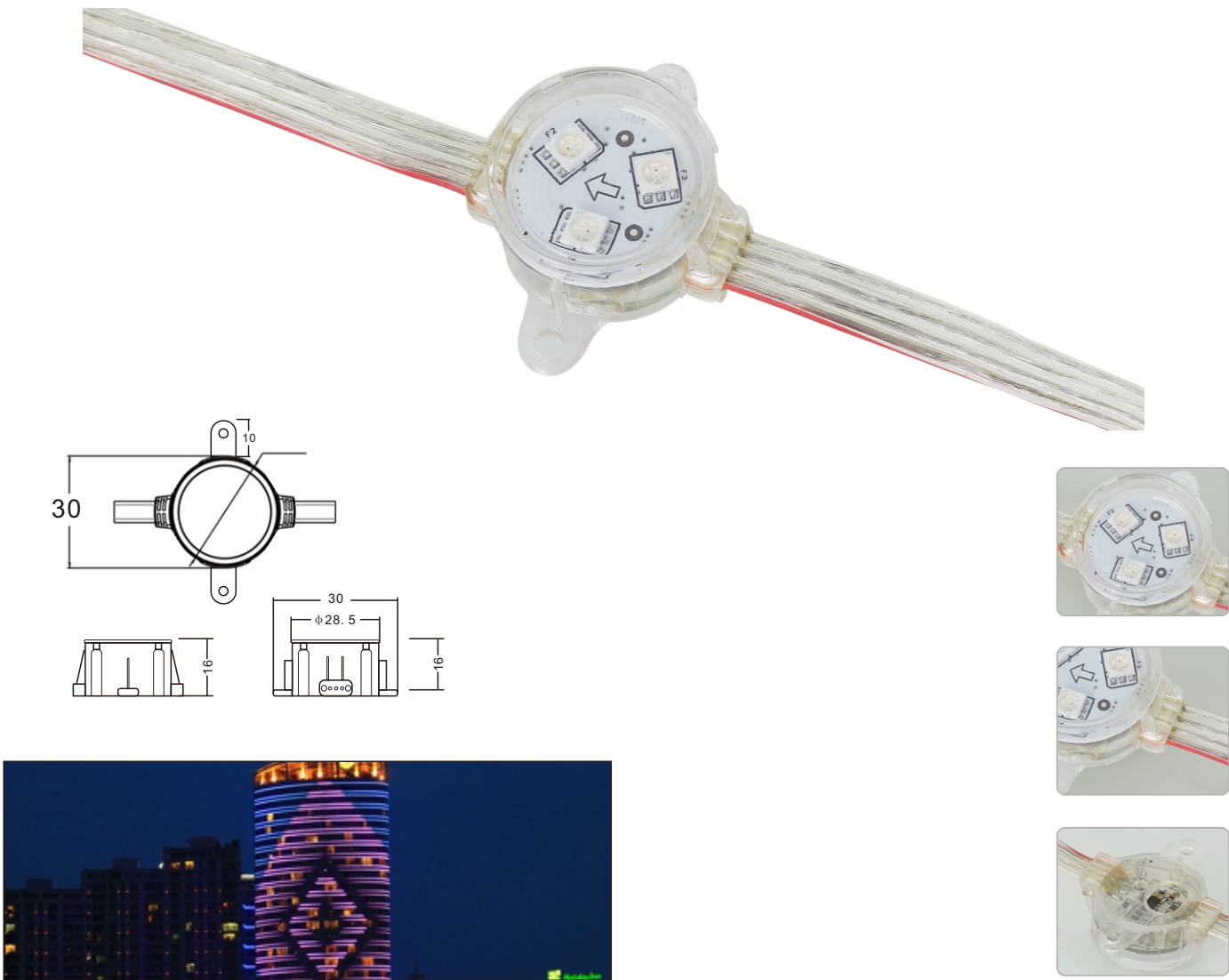
- Product features:
- Through the pixel color mix to achieve by the point and surface effects, can be replaced by a certain size of the display
  - Professional waterproof joint combination of multi-level connection, you can display text and patterns
  - The use of imported silica gel sealing waterproof, product performance and life more security
  - Small size, low power consumption, is widely used in decorative lighting projects, floor, landscape lighting, etc.
  - Waterproof level: Ip65

PRODUCT PARAMETERS

PRODUCT MODEL	PS01
Rated Power	1.5W
LED Quantity	6pcs
Luminous Flux	30Lm
Size	W35*H19*L55mm
Power input	DC24V
Light control	N/A or DMX
Beam angle	120°
Light color	Single or RGB
Housing material	Plastic PC
IP rate	IP65



PS03



PRODUCT PARAMETERS

PRODUCT MODEL	PS03
Rated Power	0.72W
LED Quantity	3pcs
Luminous Flux	15Lm
Size	φ30*16mm
Power input	DC12V
Light control	N/A or DMX
Beam angle	120°
Light color	Single or RGB
Housing material	Plastic PC
IP rate	IP65

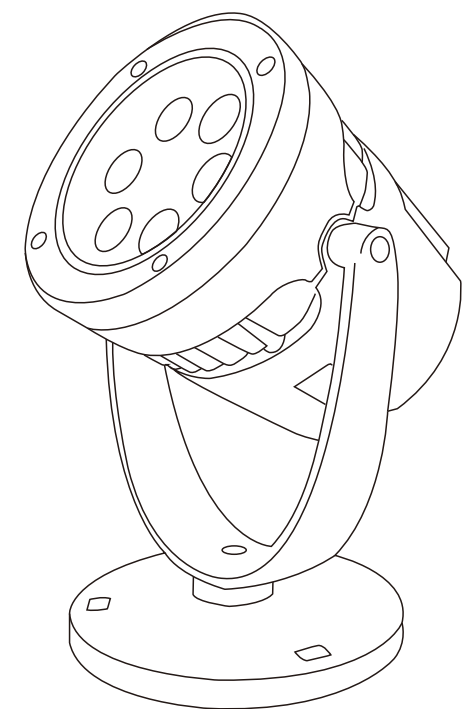




# LED SPOT LIGHT

## Product features:

- Built-in constant-current AC85V - AC265V wide voltage driver, ensure lamps and lanterns in different countries, regions or voltage instability when working;
- Control mode: monochrome normally on effect (red, green, blue, yellow, white, warm white); Internal control synchronous RGB 7 colour change;
- External control synchronous RGB 7 colour change; International standard DMX512 protocol control system;
- Waterproof level: IP65







HY071



- Product features:
- High quality die casting aluminum housing for outdoor.
  - Wide voltage range, suitable for most of countries.
  - High efficiency & low consumption -save 70% power compared with traditional lamp.
  - Environmental protection, no flickering, no UV, no infra-red radiation and harmful substance.
  - More than 50000 hours life-span.
  - Unique design of heat sink ,energy-saving.
  - Stable and durable, easy to installment and maintenance.
  - IP66 guard level, highly resistant from water and dust.

PRODUCT PARAMETERS

PRODUCT MODEL	HY071
Rated Power	24W
LED Quantity	6pcs
Luminous Flux	1320Lm
Size	φ120*135mm
Power input	DC24V
Light control	DMX
Beam angle	15°/30°/45°/60°/90°
Light color	RGBW
Housing material	Aluminum
IP rate	IP65



Hy108



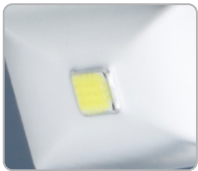
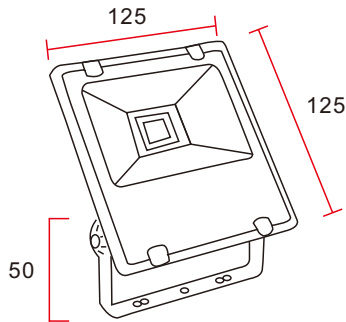
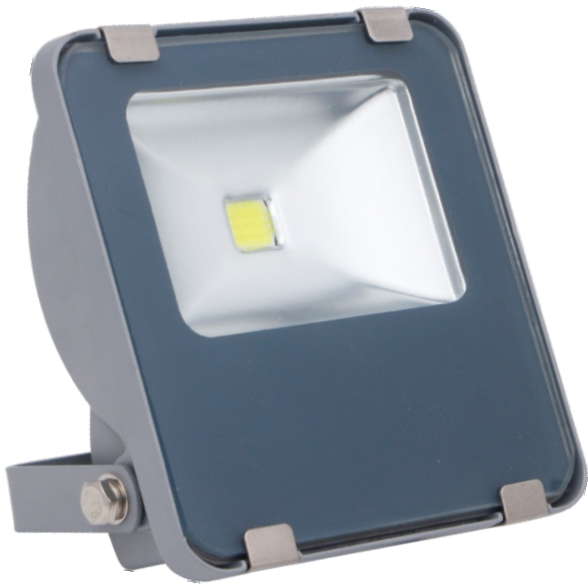
PRODUCT PARAMETERS

PRODUCT MODEL	HY108-9W
Rated Power	9W
LED Quantity	9pcs
Luminous Flux	900Lm
Size	φ142*140mm
Power input	AC85-260V
Light control	N/A
Beam angle	15°/30°/45°/60°/90°
Light color	Single or RGB
Housing material	Aluminum
IP rate	IP65





Ld01

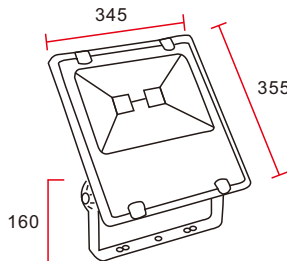
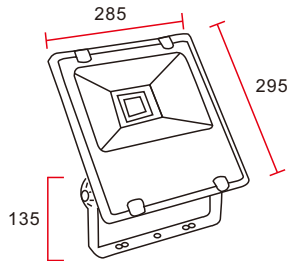
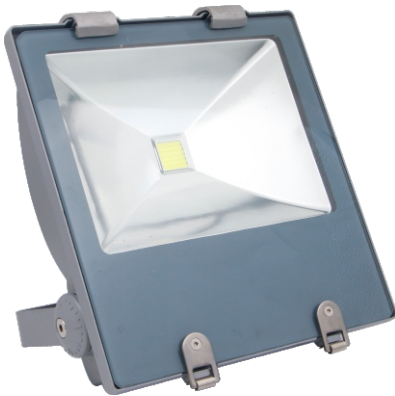
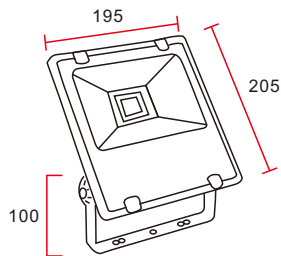
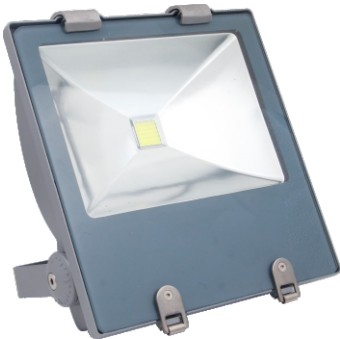
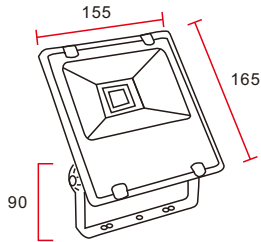


Product features:

- High quality die casting aluminum housing for outdoor.
- Wide voltage range, suitable for most of countries.
- High efficiency & low consumption -save 70% power compared with traditional lamp.
- Environmental protection, no flickering, no UV, no infra-red radiation and harmful substance.
- More than 50000 hours life-span.
- Unique design of heat sink ,energy-saving.
- Stable and durable, easy to installment and maintenance.
- IP66 guard level, highly resistant from water and dust.

PRODUCT PARAMETERS

PRODUCT MODEL	LD01-10W
Rated Power	10W
LED Quantity	1pcs
Luminous Flux	900Lm
Size	W125*125*H55mm
Power input	AC85-265V
Light control	N/A
Beam angle	120°
Light color	Single color
Housing material	Aluminum+Glass
IP rate	IP65



PRODUCT MODEL	LD01-20W
Rated Power	20W
LED Quantity	1pcs
Luminous Flux	1800Lm

PRODUCT MODEL	LD01-30W
Rated Power	30W
LED Quantity	1pcs
Luminous Flux	2700Lm

PRODUCT MODEL	LD01-50W
Rated Power	50W
LED Quantity	1pcs
Luminous Flux	4500Lm

PRODUCT MODEL	LD01-100W
Rated Power	100W
LED Quantity	1pcs
Luminous Flux	9000Lm